



Link Product Presentation:

<https://www.youtube.com/watch?v=gnQqgh4a044>



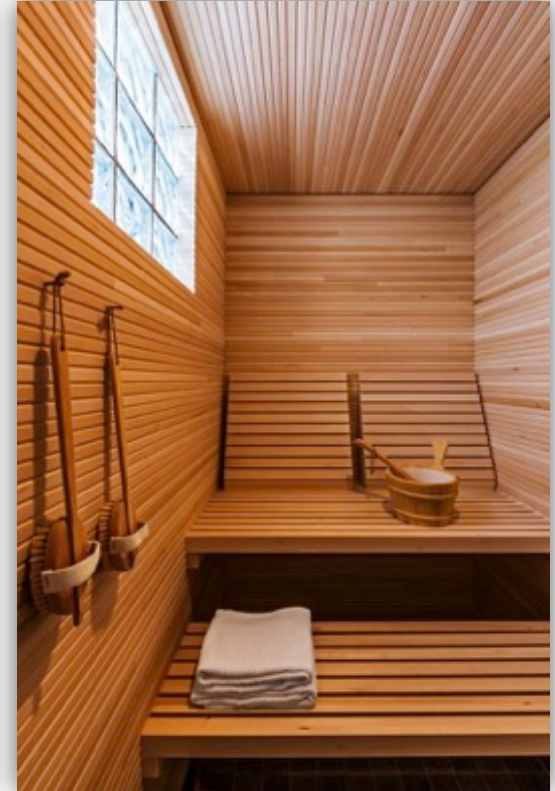
# WHERE TO USE IT: WET ROOMS



BATHROOM



SWIMMING POOL



SAUNA

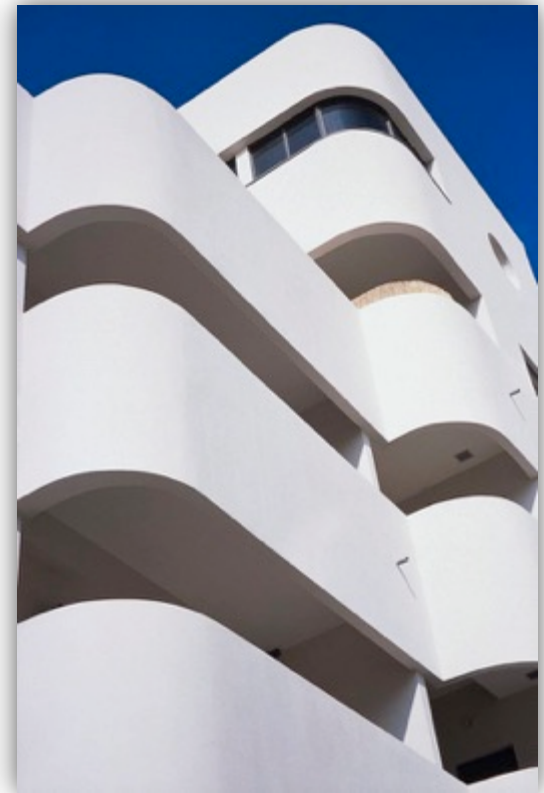
# WHERE TO USE IT: OUTDOOR



EXTERNAL FACADE



ROOFTOP



CURVED SURFACE

# WHERE TO USE IT: FIRE PROTECTION



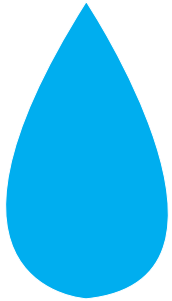
NON COMBUSTIBLE



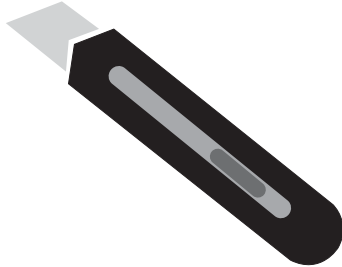
COATING IN AREAS WITH HIGH TEMPERATURES



# WHY TO USE IT: POINT OF STRENGTH



**more  
water resistant**



**easier  
to be cut**  
(just with a knife)



**non  
Combustible**  
(fire resistance up to  
240 minutes)



**lighter**



**save the  
investment**  
(save the building)



Link Fire Behaviour: <https://www.youtube.com/watch?v=5mCwpuQeA-0>



# REFERENCES

# MILAN EXPO 2015



**AZERBAIJAN  
PAVILION**



**CHINA  
CORPORATE  
PAVILION**



# OUTDOORS



Qatar

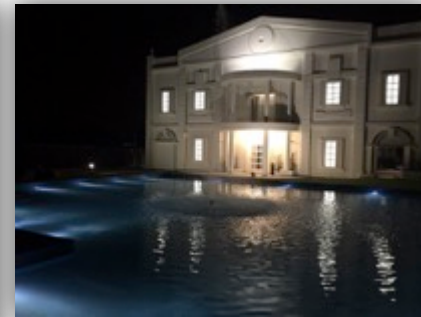


# OUTDOORS



Milan, via Tortona

# OUTDOORS



**VILLA Re NOIR**  
RESTAURANT

Restaurant facade - fountain

# OUTDOORS



Luxury apartments in Bucharest

# OUTDOORS



Use under the external finish

# OUTDOORS



External facade - rooftop

# OUTDOORS



Support for photovoltaic